

M-FTV Series Toggle Valves

2-Position, M5 & G1/8 Ports

3/2 valves have a supply, outlet and exhaust port. When the toggle is in the “on” position air flows from the inlet to the outlet and the exhaust port is blocked. Moving the toggle to the “off” position closes the inlet and opens the outlet to an exhaust port which vents the outlet to atmosphere.

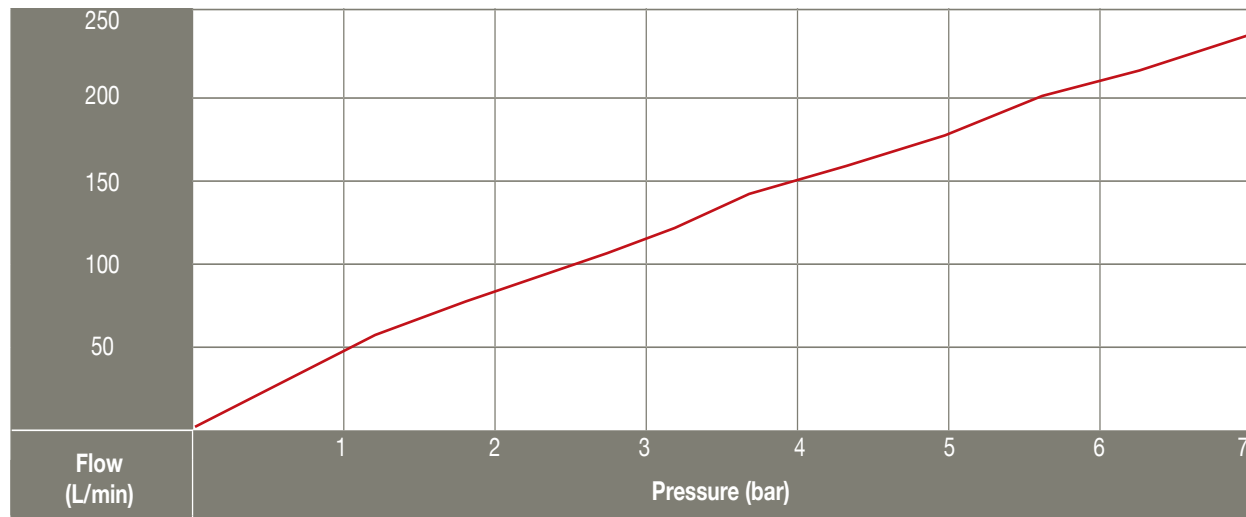
Medium:
Air

Mounting:
M12 x 0.75 thread. Nut and lockwashers furnished.

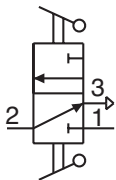
Force to Rotate Toggle:
0.45 kg nominal

Materials:
Brass body, Nitrile seals, stainless steel stem and spring

Pressure vs. Flow



- Compact design
- ENP steel or plastic toggles



options (suffix)
ENP Plating “-ENP” • FKM Seals “-V”